

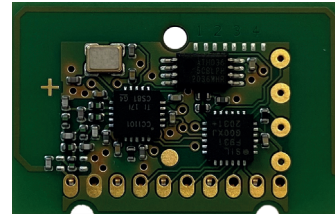
## RX22 Transceiver module

The transceiver module RX22 can send and receive Easywave, Easywave neo and secwave telegrams. It can therefore use all operating modes of any ELDAT product and is often used in a control center for smart home systems.

The RX22 is controlled by commands in HEX format via a UART interface. The software required for this must be created by the user.

A PCB antenna is already integrated on the module, so that only the power supply and data lines need to be contacted for commissioning.

For further information, a detailed interface description or sample code, please contact our sales department.



RX22ENS5031A03-U

### Technical specifications

Coding	Easywave Easywave neo secwave	
Frequency	868.30 MHz	
Channels	receive	transmit
Easywave	unlimited	128
Easywave neo	128	128
secwave	128	128
Power supply	1.8V - 3.6VDC	
Current consumption	46mA max. at 3VDC	
Operating temperature	-20 °C to +85 °C	
Dimensions (w/l/h)	28.83/18.80/1.00 mm, Grid: 2 mm	
Weight	2.0g	

### Scope of delivery

- Transceiver module

### Models

Product numbers	Description
RX22ENS5031A03-U	Transceiver module, Easywave, Easywave neo, secwave, 128 serial numbers each, w/o pin header