

# RGD03 DALI gateway

## 200 mA DALI power supply



The Easywave Dali Gateway RGD03 serves as a power supply for a DALI bus and enables controlling of up to 32 DALI devices. All programmed Easywave transmitters trigger the same function. The transmitter buttons are automatically assigned to functions. A maximum of 200 mA can be provided on the bus for DALI devices.

In factory settings, the operating mode "DIMMING 2-button operation" is pre-configured as a broadcast to all DALI devices and can be used without further configuration.

If other operating modes are to be used, the configuration must be adapted on a Windows PC, using the separately available start-up cable and the "RGD03\_Configurator" software.



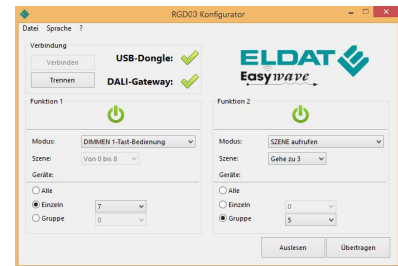
RGD03E5002A01-01K

### Technical specifications

Coding	Easywave Up to 32 transmitters can be programmed.
Frequency	868.30 MHz
Channels	1 (2 in 1-button operation)
Range	typically 150m in good free-field conditions
Power supply	230V ~ 50Hz
Power consumption	max. 60 mA
Output current DALI	max. 200 mA
Operating modes	ON/OFF (1-button operation) ON/OFF (2-button operation) DIM (1-button operation) DIM (2-button operation)* DEAD MAN (1-button operation) SCENE select JUMP through scenes
Operating temperature	-20 °C to +60 °C
Dimensions (W/L/H)	45/210/32 mm
Color	white similar RAL 9003

\* factory setting

### Configurator



RGD03 configurator

### Scope of delivery

- DALI gateway 200mA
- Operating manual

### Accessories (optional)

RGD-ACC-01-00K	Start-up cable DALI, for RGD03, length 3m, incl. software CD
----------------	--

### Models

Product number	Description
RGD03E5002A01-01K	DALI gateway, Easywave, 1x / 2x DALI commands, 200mA DALI power supply