**Model**

RTS09E5002-01

2-Channel

Technical Details

Frequenz:	868,30 MHz
Modulation:	FSK
Power Supply:	1x 3-V Battery CR 2032
Operation Indicator:	LED
Degree of Protection:	IP 40
Operation Temperature:	-20°C to +60°C
Range:	
in open field conditions:	approx. 150 m
inside buildings:	approx. 30 m
Dimensions:	22 x 45 x 40 mm
Weight:	approx. 20g incl. battery

Intended Use

The RTS09 may only be used to operate Easywave radio control units together with mains-powered devices!

The manufacturer is not liable for any damage caused by improper or non-intended use!

Safety advice

Carefully read through these instructions before connecting and operating the unit!

Please also read the operating instructions of the radio control(s).

Never operate doors or other items of equipment without keeping them under watch as you do so. Persons could be endangered.

Check the device regularly whether it is ready to transmit!

Have faulty transmitters checked by the manufacturer!

Do not make any unauthorized alterations or modifications to the transmitter!

Function

The RTS09 is a 2-channel radio transmitter with Easywave-coding A/B.

It sends different radio telegrams and switches the modes of operation selected in the radio control.

Start-Up

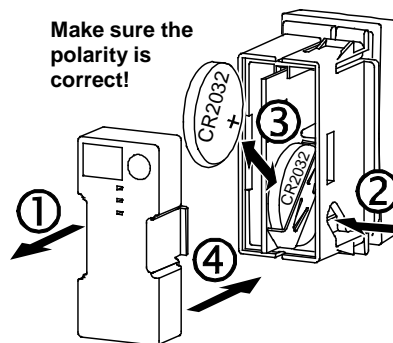
The transmitter comes with a built in battery so it can be put into operation immediately after unpacking.

1. Remove the clamp from the push button safety.
2. Mount the transmitter in the installation channel.
3. Teach the transmission code to the radio control. For this please read the operating manual of the radio control.

Replacing the Battery

Take the transmitter out of the installation channel.

1. Remove the bottom part of the housing.
2. Push the battery sideways out of its attachment, e.g. using a flat-bladed screwdriver
3. Insert a new battery. Exclusively use batteries of the type CR2032. Make sure the polarity is correct, plus-pole on top.



4. Snap in the bottom of the housing

Attention! Keep batteries out of reach of children!

Troubleshooting

- The LED is only faintly glowing: replace the battery
- The LED does not glow: check the polarity
- The control unit does not respond: move closer to the radio control or teach-in the transmission code once again.

Disposal

Waste electrical products and batteries may not be disposed of with household waste!

Dispose of the waste product via a collection point for electronic scrap or via your specialist dealer.



Dispose of used batteries in a recycling bin for batteries or via the specialist trade.



Put the packaging material into a container for cardboard and paper.

Warranty

Within the statutory warranty period we undertake to rectify by repair or replacement any product defects arising from material or production faults free of charge. Any unauthorized tampering with, or modifications to the product shall render this warranty null and void.

Conformity

This product complies with the essential requirements of the R&TTE directive 1999/5/EG.



For use in: EU/CH/FL/IS/N

The Declaration of Conformity can be found on the internet at: www.eldat.de.

Customer Service

If, despite correct handling, faults or malfunctions occur or if the product was damaged, please contact the company at the address below:

ELDAT GmbH

Im Gewerbepark 14
D-15711 Zeesen
Germany

Phone: + 49 (0) 33 75 / 90 37-310

Fax: + 49 (0) 33 75 / 90 37-90

Internet: www.eldat.de

e-Mail: info@eldat.de